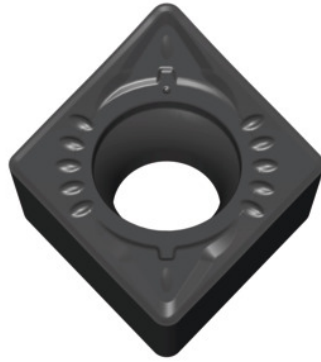


Garant

Indexable insert for turning CC.T 120408, for medium machining, Grade: HB7210-1

**Order data**

Order number	260160 HB7210-1
GTIN	4062406059224
Item class	21G

Technical description

Main application	K
Cutting conditions	slightly interrupted
Finishing/roughing assignment	Semi-roughing
Feed f	0.1 - 0.25 mm/rev.
Corner radius	0.8 mm
Cutting speed v_c main application	100 - 450 m/min
Chip breaker	GM
Cutting depth a_p	0.2 - 2.5 mm
Grade	HB7210-1
Tool material	Carbide

Coating	TiCN
ISO code indexable insert	CCMT 120408
Number of changes/inserts	2
Tolerance	M
Type of product	Indexable insert for turning